



Fort Benning Clothing Initial Issue Point Quartermaster

CIIP QMR BRIEF



PURPOSE

- **PURPOSE:** To provide information on Clothing Initial Issue Point (CIIP) effort to support exchange or alteration of misfit clothing and footwear for basic/advanced individual training Soldiers IAW Army Regulation 700-84.



CIIP QMR Brief

Soldiers must have the exact sizes listed on their clothing record to exchange any items during the QMR appointment. All clothing items and footwear must be clean, dry, and free of soil. Any article of clothing that is suspected of being damaged on purpose for the sake of receiving new clothing will not be accepted. This is provided such damage was not caused by any fault or negligence on the part of the Soldier. Soldiers exchanging ACU uniforms due to significant weight loss/gain or normal fair wear and tear should arrive at the appointment with four complete sets of uniforms. The DA Form 3078 must be signed by the Unit Commander. The Commander has the option to digital sign the DA Form 3078 or use his original signature.



Items not Accepted

Soldiers should be issued protective clothing authorized by CTA 50–900 when working in areas such as painting or performing other tasks where the uniforms could get damaged. Soldiers can only exchange items listed on their clothing record. Any article of clothing worn next to the skin such as APFU trunks, APFU shirt, and briefs will not be exchanged.

QTY'S AUTHORIZED TO EXCHANGE

Boots

Unserviceable/misfit

2 pair of hot weather boots & 1 pair of temperate weather boots.

ACU's

Significant weight loss/gain = 4sets

Unserviceable due to FWT = 4sets

Intensive training

Red Clay = up to 2sets (CIIP Employees approval)

3 or more CIIP Supervisor/Asst Supervisor approval



Example of Excessive Weight Loss

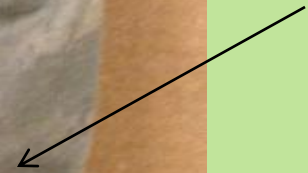


Example of RED CLAY Damage

ACU Tops



Red Clay or heavy soiled



Example of RED CLAY Damage

ACU Tops

Red Clay or heavy soiled



Example of RED CLAY Damage

TROUSERS



Example of RED CLAY Damage

TROUSERS



Example of RED CLAY Damage

TROUSERS





Example of unserviceable boots





Example of Intentional Damage





Example of Ink Stains



The End